



PETERLEE '75 1948—2023

**Photo Exhibition in
Castle Dene Shopping Centre
OPENS 30 JUNE 2023**

Amongst the first wave of “New Towns” designated in post-war Britain, Peterlee was envisioned as “a capital for the miners” of Easington Rural District, holding out the promise of decent quality housing, modern amenities, and new employment opportunities for all.

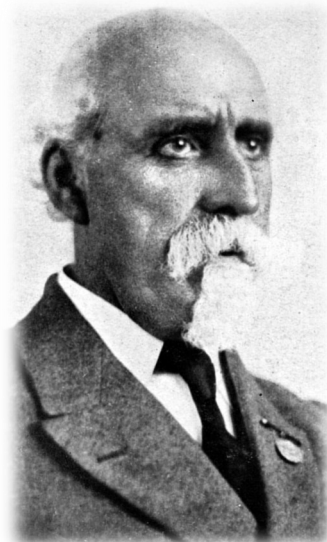
This is a story rooted in the fortunes of the coal industry and the communities that grew from it, as seen through the lens of the present: 75 years on from the birth of a ‘dream’.

Peterlee was one of the new towns that became the Government’s vision to provide self-contained communities with well-designed housing on open field sites and offering local employment opportunities, particularly for women, after the Second World War. The Government and County Council felt building a new town was preferable to building new housing in individual villages and in East Durham the government point of view was to move communities away from the pits *“with their waste heaps, dilapidated buildings, dilapidated land and poor quality housing where the smell, smoke and noise of the pits is always present”*.

Preparing his report, *Farewell Squalor*”, in support of the new town for the Easington District, Mr C W Clarke, wrote that the miners *“lacked cultural, recreational and shopping facilities alongside their inadequate living conditions”*, and that individual villages were unsuitable for expansion. This was Mr Clarke’s view, a view not shared by mining families.

The new town offered mining families a major change to their living conditions and lifestyle but it also provided them with a massive challenge to their long-standing, familiar routines where their villages were seen as close-knit communities, where community spirit, camaraderie, a sense of belonging and the support of your neighbours was valued and could be relied upon. They found it difficult to imagine a

situation which would involve leaving extended family behind by moving to the new town. Living in Wheatley Hill in poor quality, rent-free colliery owned accommodation, many felt was a small price to pay for some who felt the benefits of colliery village life outweighed the disadvantages of their living arrangements and there was great opposition to the new town from parish councils, the National Coal Board, local miners’ lodges, MP Manny Shinwell and many more but as we know, the new town got the go ahead.



It was named after Peter Lee, the man who did so much for the villages of Wheatley Hill and Thornley at the beginning of the 20th Century. C W Clarke, in his justification for naming the town after Peter Lee said: *“I have come to the conclusion that this new town should bear the name of some local man who, during his lifetime, went fearlessly and courageously forward for the good and uplift of the people in this district. A man who was a power both in bodily physique and mental ability, a man who had the courage of his convictions—and there are few of these”*. (this quote has been edited).

CONTACT DETAILS

CHAIR: 01429 820813
TREASURER: 01429 823198

Find us on

facebook

<https://www.facebook.com/wheatley.hillhistory/>

E: history.club2@btinternet.com

W: wheatley-hill.org.uk

<https://www.facebook.com/wheatley.hillhistory/>

MEETINGS IN WHEATLEY HOUSE

Start at 11.00am

Change of meeting details from calendar

30 Aug History of Peterlee C Robson

27 Sept A Necessary History A Atkinson
The British Toilet

Change of meeting details from calendar

25 Oct Wheatley Hill Cemetery History Club

May was Local History Month

Thank you for supporting our 31 images
posted throughout May

LIKES

1249

Overall
Likes & Comments

COMMENTS

287

Image that had the most likes & comments



We posted an image a day on Facebook throughout May to celebrate Local History Month. The posts were noticed and acknowledged by 1249 people with 287 making comments about them. This image received the most attention.



**Supporting Families
Through Miscarriage,
Stillbirth &
Child Loss**

Friends of our advertiser
“Sahota’s Nest Fisheries”
have raised over £6000 for
the above charity.

Nine of them did a sky dive
from Shotton airfield on
Saturday 8 April.

This was a fantastic
achievement for a great
charity. Well done to all.



Jean Dobson 1938—2023

It was with great sadness that we learned of the death of Jean on the morning of Monday 26 June. She was a great supporter of our History Club, being a member for almost 25 years. She was also a good supporter of the Heritage Centre where she made the tea every Saturday afternoon.

Unfortunately, after a bad fall at home a few years ago, it became impossible for Jean to live on her own any longer and she moved into the Ashwood Park Residential & Nursing Home at Easington Colliery.

We are thinking of Jean’s family at this very sad time.



Brass Band Night at the Mothers' Club

Wednesday 5 July 2023



As usual, on the Wednesday before the Durham Miners Gala, the Peterlee GT band performed a concert at the Mothers' Club held in Wheatley Hill Workingmens Club.

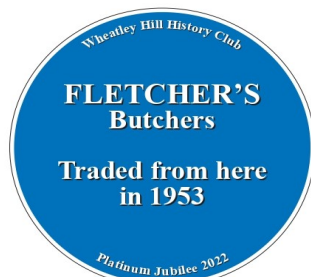
Once again, it was a very well attended night and the band were fantastic, performing a new repertoire, including some numbers that required audience participation—and we did them proud!!

Members of the Mothers' Club put on an excellent buffet and organised a raffle and the proceeds raised are shared between the Mothers' Club and the Wheatley Hill Banner Society.

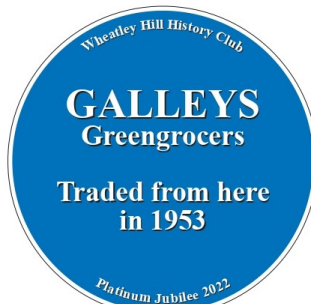
The Peterlee band accompany the Wheatley Hill banner into the Miners Gala every year, this year marching through part of the village before playing at Abbott's Court, from where their bus picked them up and took them into Durham.

PLATINUM JUBILEE PROJECT

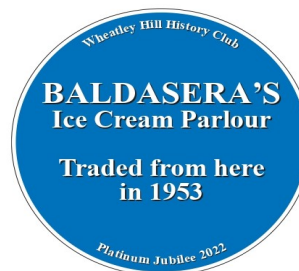
Our blue stickers scheme got underway in June when all trading premises in Wheatley Hill front street was allocated a sticker that indicated what the premises were used for in 1953. The traders have all been supportive and most have put their stickers in their street-facing windows.



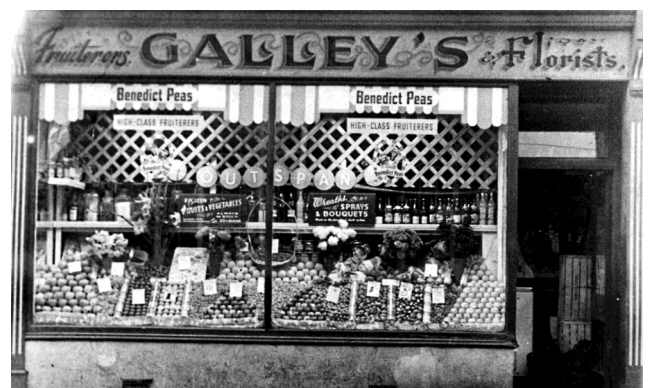
The Hot on the Spot food outlet, are now trading in the old Fletcher's Butchers Shop and when they were preparing their shop for opening, they uncovered the original butcher's floor-



Have a walk along the front street to see the blue stickers in shop windows



This shop is now a private house and the householder was delighted to be involved in our project.



This shop is now *Fast Fry* and you will see their blue sticker in the window.

Wheatley House

Wheatley House was formerly the men's hostel within the aged miners homes complex, opened in 1924. It is now a community hall managed by a committee to provide a gathering place for the people of Wheatley Hill and surrounding area to hold a range of functions

All types of functions for up to 70 people

Parties
Christenings
Funeral Gatherings

Training/Meetings
Overhead projector/black out blinds
Tea/coffee making facilities

Reasonable Rates
Well equipped kitchen
For use by outside caterers
including supply of
crockery & cutlery

For more details:
Eileen: 07450344806
Elbriddeileen@aol.co.uk

Past Uncovered

All types of family history research

Are you curious about your family tree?
Pre-1837 records difficult to find?
Have you come to a dead-end?
Do you have missing ancestors?
Would you like your research organising?

Margaret Hedley, MA, B.Ed(hons)

Experienced and reliable researcher
Talks and Workshops on Local and Family History

E: margaret@pastuncovered.com
W: pastuncovered.com
M: 07977546332



Steve Coxon
CHIMNEY SWEEP
A professional, clean and reliable service

Traditional Sweep

Stove Maintenance
Professional Advice
Full Vacuum & Power Sweep
CCTV Chimney Surveys
Smoke Tests
Fully Insured
All Work Guaranteed
Domestic and Commercial
Competitive Rates

All Areas Covered

Call Steve
The Sweep
07963749732
24-hour
Answer Service

Safety Comes First -
Remember to book your Sweep



Here and Now
Hypnosis & Performance Coaching

Stop Smoking
Fears & Phobias
Dealing with Stress/Anxiety
Self Esteem & Confidence
Weight Loss
Exam Performance
Habits & Addictions

Professional Hypnosis & Coaching

FREE 30 min on line consultation

Are you struggling with giving up a bad habit?
Is life just not how you want it to be?
Frequently feeling down?

Call Mark Ryder
For a confidential chat today
T: 07342932660
E: mark@hnow.co.uk



OPEN

Lunch Times
&
Evenings
Every day
except Sundays



Fish & Chips Delivered to your Door



LUNCHTIME & EVENING DELIVERY SERVICE

Tel: 0191 526 1932

our new address

4 Redesdale Court

VIP
Trimdon Grange

TAXIS
TS29 6LE

01429 821999